



# Company Profile and Capability Statement

**SERVICES AND EXPERIENCE**



*Gallery House Portside Hamilton QLD*

## AWARD-WINNING PARTNERS IN FIRE SAFETY

Established in 1999, Fire Check Consultants (FCC) provide strategic fire engineering services for investors in the built environment and other special risk areas throughout Australia and overseas. FCC offers prompt, efficient, and friendly dedicated professional fire engineering services. Our fire safety and fire protection engineers are accredited with all State Building Professional Boards. The FCC facilitative approach assists in satisfying mandatory legislative compliance, satisfying Australian Standards and codes of practice, maximising capital values and increasing the life expectancy of property investment assets.

The FCC Mission Statement is:

***“To Ensure a Safe and Resilient Environment by Innovative Fire Prevention, Safety and Engineering Excellence”***

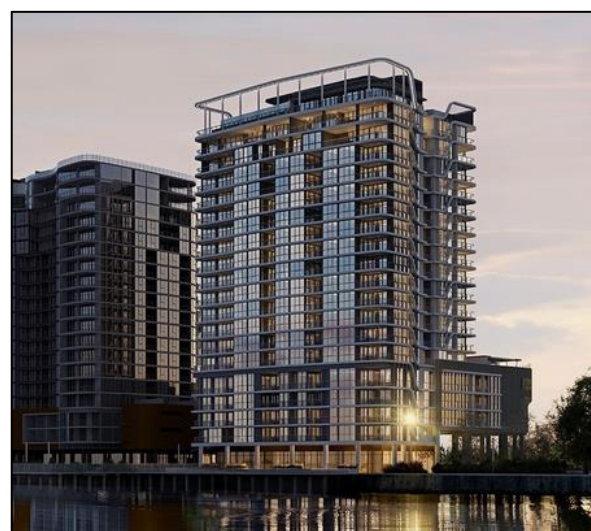
FCC has been extensively involved with numerous prestigious projects, undertaking fire safety engineering since Australia's introduction of performance-based design. At this time, the company is one of the oldest practices in performance-based fire engineering solutions. At FCC, we have successfully dealt with many residential towers, large shopping centres, healthcare premises, automated warehouses, industrial complexes, mines, airports, and much more.

FCC has the expertise and experience and is a leader in Fire Safety Engineering by applying practical engineering to complex problems associated with new and existing buildings built or upgraded to comply with the National Construction Code. The Aged Care Facilities Reforms program was one of the earliest projects, where FCC undertook fire safety assessments and provided fire engineering solutions throughout Queensland.

FCC has been honoured to receive the “Urban Development Institute of Australia” (QLD) award for Consultancy Excellency applied to the newly constructed ‘Link Portside’ residential building at Brisbane’s iconic Hamilton cruise port and shopping precinct.



*Lucid Apartment Brisbane*



*Rivello Apartments Hamilton*

## FCC EXPERTISE

FCC has the expertise to develop fire engineering solutions, meet the challenges posed by complex building design, and assist clients in achieving compliance within the relevant Building Regulations and Standards. FCC engineers are Registered Chartered Professional Engineers (CPEng) with the Institution of Engineers Australia, Chartered Engineers (CEng) with the Engineering Council UK, and New Zealand Engineering Council members. Our engineers are accredited with the Asia-Pacific Economic Cooperation Group (APEC Engineer), International Professional Engineer (IntPE), Board of Professional Engineers QLD (RPEQ), the Building Professionals Board NSW (C10), and the Victoria Building Authority (RBP).

FCC team of fire safety engineers and fire protection engineers strive in providing the following services to our valued clients in Australia and Globally:

### Fire Safety Engineering

- Fire Safety Concept Design
- Performance-Based Fire Engineering
- Structural Fire Engineering
- Fire, Smoke and Evacuation Modelling

### Fire Protection System Services

- Fire Protection System Design
- Fire Safety Schedule and Baseline Data
- Evacuation Sign and Fire Protection Equipment Asset Register
- Tender Specifications

### Fire Advisory Services

- Building Code and Standard Advice
- Timber Frame Construction
- Bush Fire Structure Design
- Feasibility Study (Cost-Benefit Analysis) of Fire Safety System

### Technical Reviewing and Certification

- Third-Party Peer Review
- Product compliant with Australian Standards
- NSW Annual and Supplementary Fire Safety Statement
- Evidence of Suitability
- Fire Safety Certificate



### Fire Risk Management

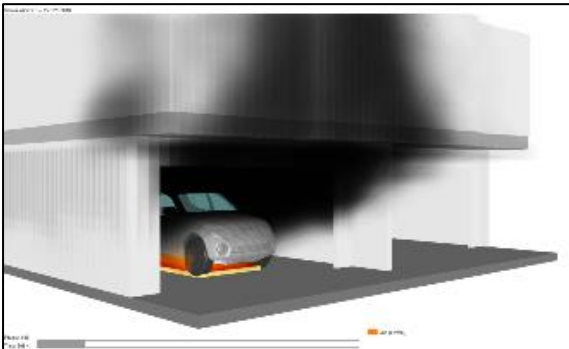
- Fire Risk Assessment
- Fire Safety Audit
- Building Facade Audit
- Hazardous Goods Inspections
- Fire and Evacuation Plan
- Fire Safety Training

### Investigation Matters

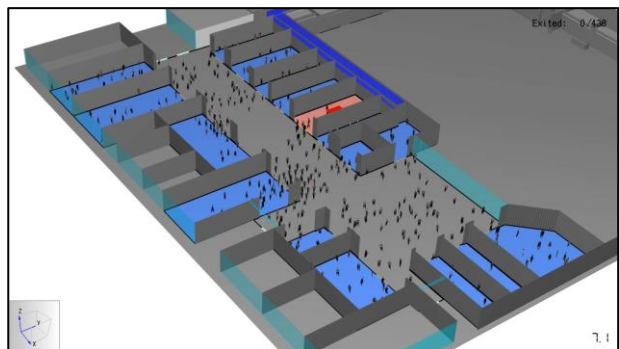
- Fire Investigation
- Unwanted Alarms
- Unwanted Sprinkler Activation
- cPVC Sprinkler Component Failure
- Fire Damage Assessment and Remedial Measures

## FIRE SAFETY ENGINEERING

Fire Engineering is still a relatively young discipline and one in which FCC has been instrumental, driving the industry through knowledge and innovation, making the world a better, safer place. FCC specialises in the development of Performance Solutions. The National Construction Code (NCC), a performance-based code, allows Performance Solutions to encourage innovation, artistic creativity and cost savings by satisfying compliance with the Performance Requirements. Performance Solutions enable designers to develop an innovative solution that provides the best outcome for the project.



*FDS Simulation used for Fire Engineering*



*Pathfinder Simulation for calculating evacuation times*

## FIRE PROTECTION SYSTEM SERVICES

FCC offers specification and design drawing services encompassing mining, industrial, commercial, residential and domestic type fire risks. This service includes producing designs, specification writing and design drawing production, such as:

- Water-based Fire Protection Design (fire sprinkler, wall-wetter, fire hydrant, hose reel, water-based spray and deluge systems)
- Non-water based Fire Protection Design
- Gaseous fire suppression systems
- Fire Protection Equipment Asset Registers
- Tender Specification



*Australian Country Choice QLD*



*Norfolk Island International Airport Norfolk Island*

## FIRE ADVISORY SERVICES

The National Construction Code (NCC) is given legal effect by relevant legislation in each State and Territory. This legislation prescribes the NCC to satisfy technical requirements when undertaking building work. FCC has provided advice on NCC requirements for many prestigious buildings in Australia.

FCC can provide the necessary documentation to show that the timber frame construction remains suitable when considering the fire resistance level and boundary conditions. FCC can also design bush fire structures to the traditional measures of hazard reduction in compliance with AS 3959 and fire protection systems.



*The University of Queensland Schonell Theatre*



*The Broadway Hotel Woolloongabba*

## TECHNICAL REVIEWING AND CERTIFICATION

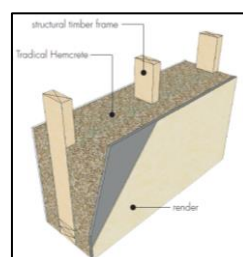
FCC undertakes independent third-party peer review as a constructive process that will support the fire safety engineering design and assessment process and assist relevant stakeholders in making a sound decision about the suitability of proposed alternative solutions.

FCC recommends peer review for large and complex projects, alternative solutions relating to critical life safety features, and differences of opinion of stakeholders on fire engineering issues.

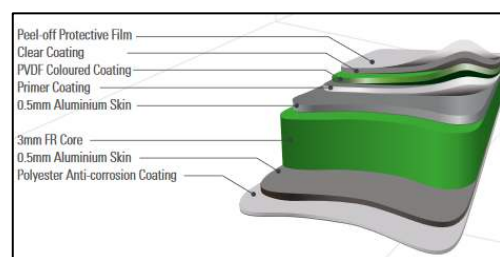
If you have got something that does not conform with the building code 100% but still feel compliant, FCC can produce an Evidence of Suitability report. FCC uses engineering judgement to show equivalence with the proposed configuration against that of the required performance requirements of the building code.



*CleverEVAC DYGC-CP-RR Exit Sign*



*Tradical Hemcrete*



*Vitrabond FR Panel*

## FIRE RISK MANAGEMENT

FCC can undertake a Fire Safety Audit of your building or site. The Fire Safety Audit assesses the building for compliance with the NCC, relevant Australian Standards and the State/ Territory Building Fire Safety Regulations. The audit findings also provide recommendations on how to remedy any non-compliances that were identified.

Aluminium Composite Panels (ACPs) are commonly used by designers and builders worldwide as feature panels or lining to provide a decorative finish to the external walls of buildings. FCC can determine the extent of use of non-compliant external wall cladding materials that could deteriorate into unsafe conditions and suggest a range of possible mitigation measures.

FCC can prepare a Fire and Evacuation Plan for your building and assist building management and occupants to understand the plan and impart training.



*Macrossan Residences Brisbane*

## INVESTIGATION MATTERS

Fire investigation, sometimes referred to as origin and cause investigation or fire scene examination, is the analysis of fire-related incidents. Investigations of such incidents require a systematic approach and knowledge of fire science and engineering. FCC consultants are expert in cause and origin determination.

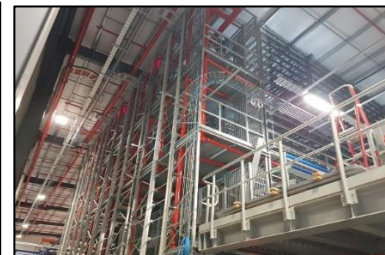
Unwanted Alarms are a significant problem for the community and relevant stakeholders. An excessive number of Unwanted Alarms can result in non-compliance with the relevant section of the Fire Service Act. Also, fire sprinkler activation can be caused by mechanical impact, thermal changes, excessive pressure inside the fire protection piping, or an underrated fire sprinkler installed in a location where the temperature exceeds the rated temperature for that head rating. FCC experts conduct a site visit and collect all the evidence and information, and determine the most probable cause of unwanted alarm and fire sprinkler activation.



*Childers Hotel backpackers fire*



*Cleanaway Bohle liquid waste fire*



*Symbion unwanted sprinkler activation*

## TESTIMONIALS

### **Project: iSeek Data Centre, 4 Cycas Lane Brisbane Airport QLD**

*“FDC Fitout and Construction engaged Fire Check Consultants (FCC) for their fire engineering services on one of our recent projects, the construction of a new data centre for iseek Communications. This was a Tier IV, fault tolerant data centre, requiring all redundant services to be fire segregated from each other and from potential fault sources. The project also involved the installation of MASDS detection systems, gas suppression systems and standby generators with bulk diesel storage. Together these presented some significant challenges in completing a build that was compliant with the NCC and relevant standards but also satisfied the bespoke requirements of our client. FCC were an integral part of this process, assisting with advice, inspections and performance solutions. They provided pragmatic and innovative solutions to the unique complications of this project and helped us to achieve the required outcomes.”*

**David Leggereit**  
Services Manager, FDC

### **Project: Star Mountain Plaza Stage 2 PNG**

*“Dear Dr Than Sharma, The work of Fire Consultancy Service undertaken by your team is being carried out with a high level of skill and professionalism. Your team should be proud of its significant contribution to this landmark project which shall be the newest addition to the Port Moresby skyline. We look forward to your team’s continued support over the coming months as the project progress towards its completion.”*

**Jacky Feng**  
CSCEC Steel (PNG) Co., Ltd

### **Project: Metcash Stage 5 (Warehouse A - Second Extension)**

*“Appreciate Firechecks input and efforts on this project, really made it straight forward and easy. Pushing the revised FER through after the changes was also appreciated. Look forward to working on another one in the future.”*

**Cameron Doyle**  
Project Manager, Douglas Construction and Engineers

### **Project: Ullrich Aluminium**

*“Fire check provided us with a high level of service and experience that save us the peace of mind to know we will be compliant with the QLD fire requirements. Aayush Sharma was very helpful during the entire process and after.”*

**Shane Rothero**  
Regional Branch Manager  
For Gilbert Ullrich, CEO, Ullrich Aluminium

## CONTACT INFORMATION

Whether you are constructing a new building or refurbishing an existing one, FCC can provide you with the best advice for implementing the NCC Deemed to Satisfy (DtS) or performance requirements. Our office is located in Chermside, North of Brisbane, Queensland, and we offer consulting services throughout Australia and neighbouring countries on a fly-in fly-out basis.

### Office Address

Suite 7, 671 Gympie Road  
Chermside Queensland 4032  
Australia  
P: +61 7 3205 2370  
E: [reception@firecheck.com.au](mailto:reception@firecheck.com.au)

### Postal Address

PO Box 62  
Chermside South  
Queensland 4032  
Australia

Please contact us for your requirements:

### Contact Persons

Simon Cushway  
Project Manager  
P: 07-3093 2934, 07-3205 2370  
E: [s.cushway@firecheck.com.au](mailto:s.cushway@firecheck.com.au)

Aayush Sharma  
Senior Fire Safety Engineer  
P: 07-3093 2936; 0403 531 574  
E: [a.sharma@firecheck.com.au](mailto:a.sharma@firecheck.com.au)

For further information on the business, please visit FCC website at [www.firecheck.com.au](http://www.firecheck.com.au).

### Our Iconic Projects



*Estillio on the Park Chermside*



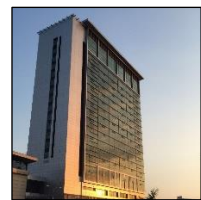
*Brisbane Racing Club Ascot*



*Zahra Apartments New Farm*



*BOQ Brisbane*



*The Stanley Hotel PNG*



*Queens Plaza Brisbane*



*Pacific Fair Shopping Centre*



*Hotel Terminus Brisbane*



*Toowoomba Hospital*



*Robinwalk Robina*



*St John's Cathedral*



*Reading Cinema Newmarket*



*Multicultural Centre, Brisbane*



*Brisbane Entertainment Centre*



*St Margaret's Anglican Girls School*



*I Seek Data Centre Brisbane Airport*



*Ingham QLD*



*Oaktree Retirement Village*

***Our dedicated fire safety consultants have the skills, knowledge and resources to meet your needs.***